

# PATIENT ENGAGEMENT IN RESEARCH PLAN

Patients, survivors, thrivers, caregivers and families (collectively, called “patients”) make sure people affected by cancer shape the way that research funding and funding decisions are made.



Canadian  
Cancer  
Society

## HOW WE WORK Guiding Principles

### VISION

The Canadian Cancer Society (CCS) aspires to integrate meaningful patient engagement into research projects and research funding processes to improve impact and relevance to CCS’s patient community and foster health equity through implementation of social practices. This will ultimately improve patient outcomes.



Safety



Co-Build



Clear  
Communication



Accountability



Diversity of  
Experiences



Mutual  
Respect



Knowledge  
Exchange



Personalized &  
Progressive

## WHY ENGAGE?

“Involving patients in the review process of research grants brings a perspective that many researchers are not familiar with. The sense of participating in an important program was rewarding. I found the experience invaluable.”

Angus, Patient/Survivor/Caregiver (PSC) Reviewer & Advisory Council on Research (ACOR) member

## WAYS TO ENGAGE

### Lead

We will support patient leadership. Last year CCS welcomed patient members to our Advisory Council on Research (ACOR).

### Co-Create

We will identify issues and co-develop solutions with patient partners. Patient partners engage as Program Advisors and Patient / Survivor / Caregiver Reviewers in all of our current research competitions.

### Consult

We will seek input and advice from patient partners. For instance, patient partners co-developed our website, reviewed and were featured in our 2022 Research Impact Report.

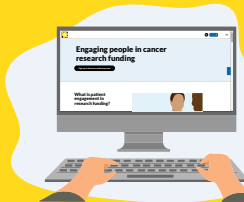
### Inform

We will share information in multiple ways. This includes research competition news and results and patient partner experiences in emails, on our website, by video and other ways.



### COMPENSATION

We created a Patient Partner Compensation Policy designed to facilitate patient participation and to support equity, diversity and inclusion. We offer compensation to all of our patient partners in accordance with our policy.



### CONTACT US

To learn more about being a patient partner and engaging with patient partners, visit our website: [cancer.ca/ENpatientengagement](https://cancer.ca/ENpatientengagement). Have questions or comments? Contact: [research@cancer.ca](mailto:research@cancer.ca).