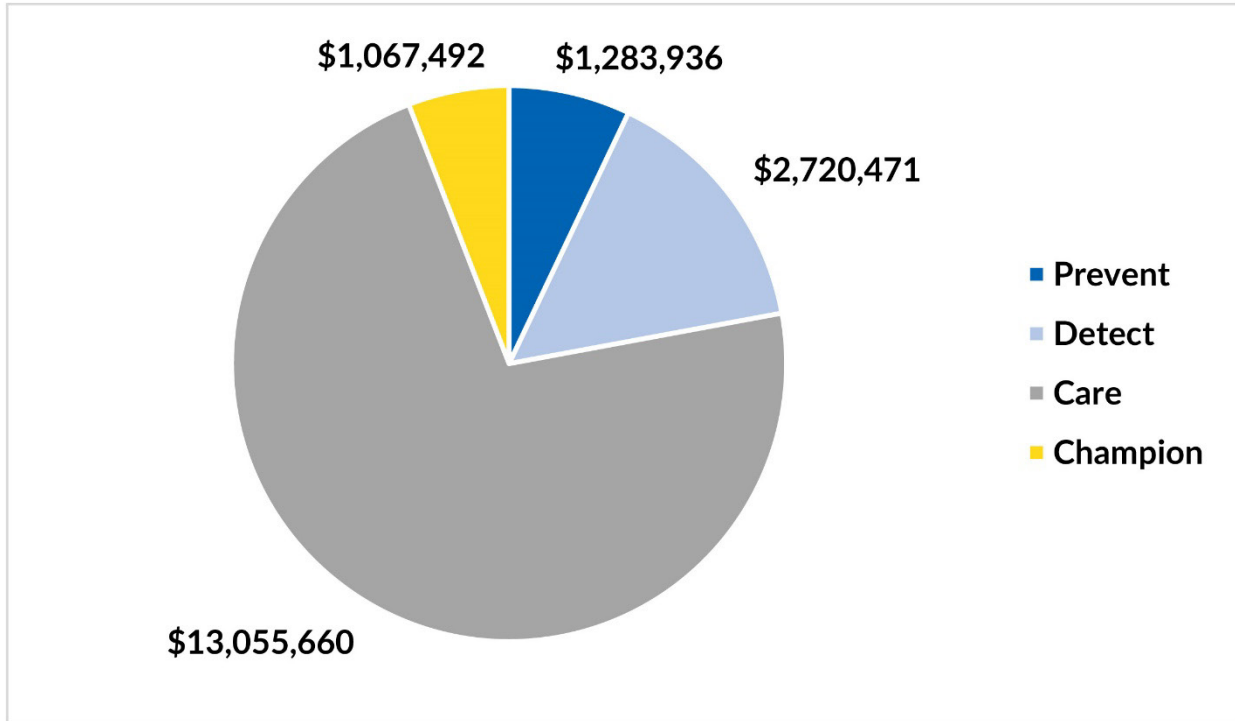




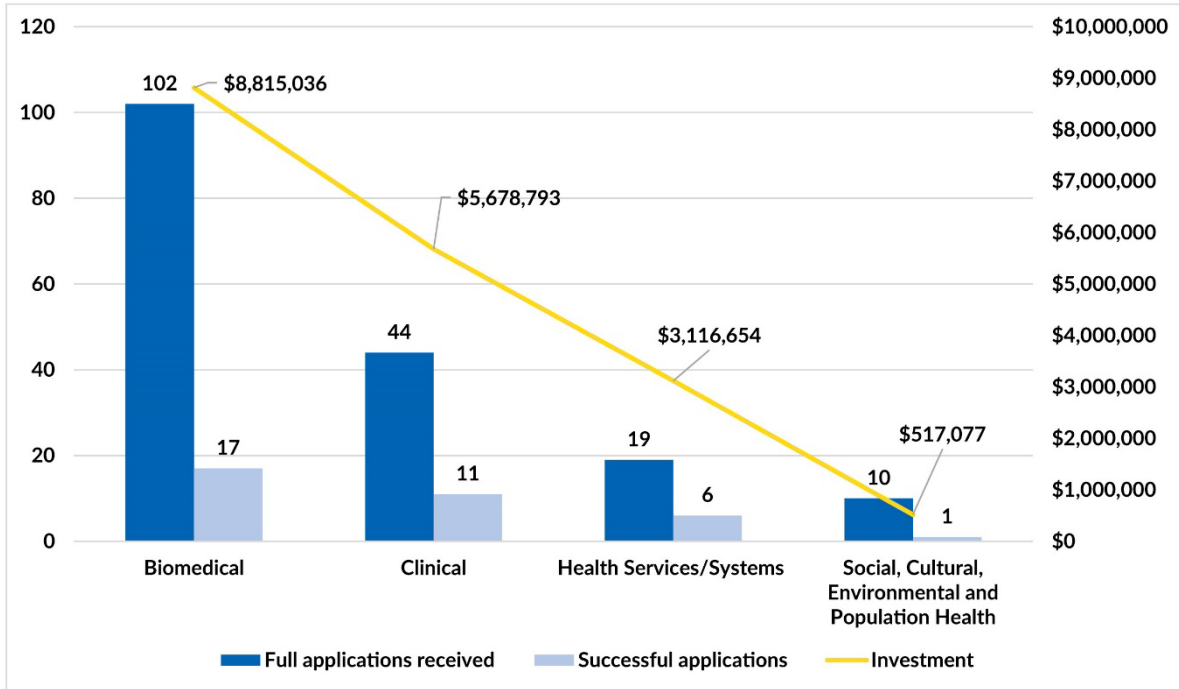
Investment by goal



Research Goal	Investment
Prevent	\$1,283,936
Detect	\$2,720,471
Care	\$13,055,660
Champion	\$1,067,492
Total	\$18,127,560



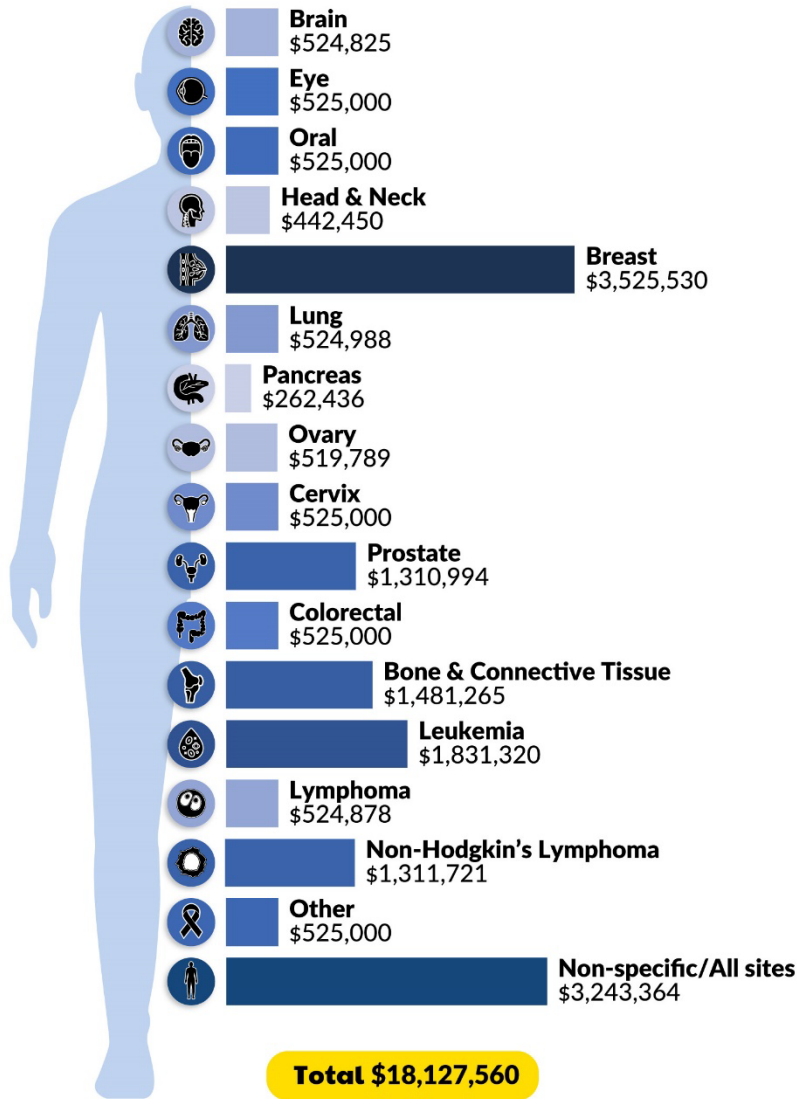
Investment by research area



Research area	Full applications received	Successful applications (percent of total applications)	Percent of total successful applications	Investment
Biomedical	102	17 (17%)	49%	\$8,815,036
Clinical	44	11 (25%)	31%	\$5,678,793
Health Services/Systems	19	6 (32%)	17%	\$3,116,654
Social, Cultural, Environmental and Population Health	10	1 (10%)	3%	\$517,077



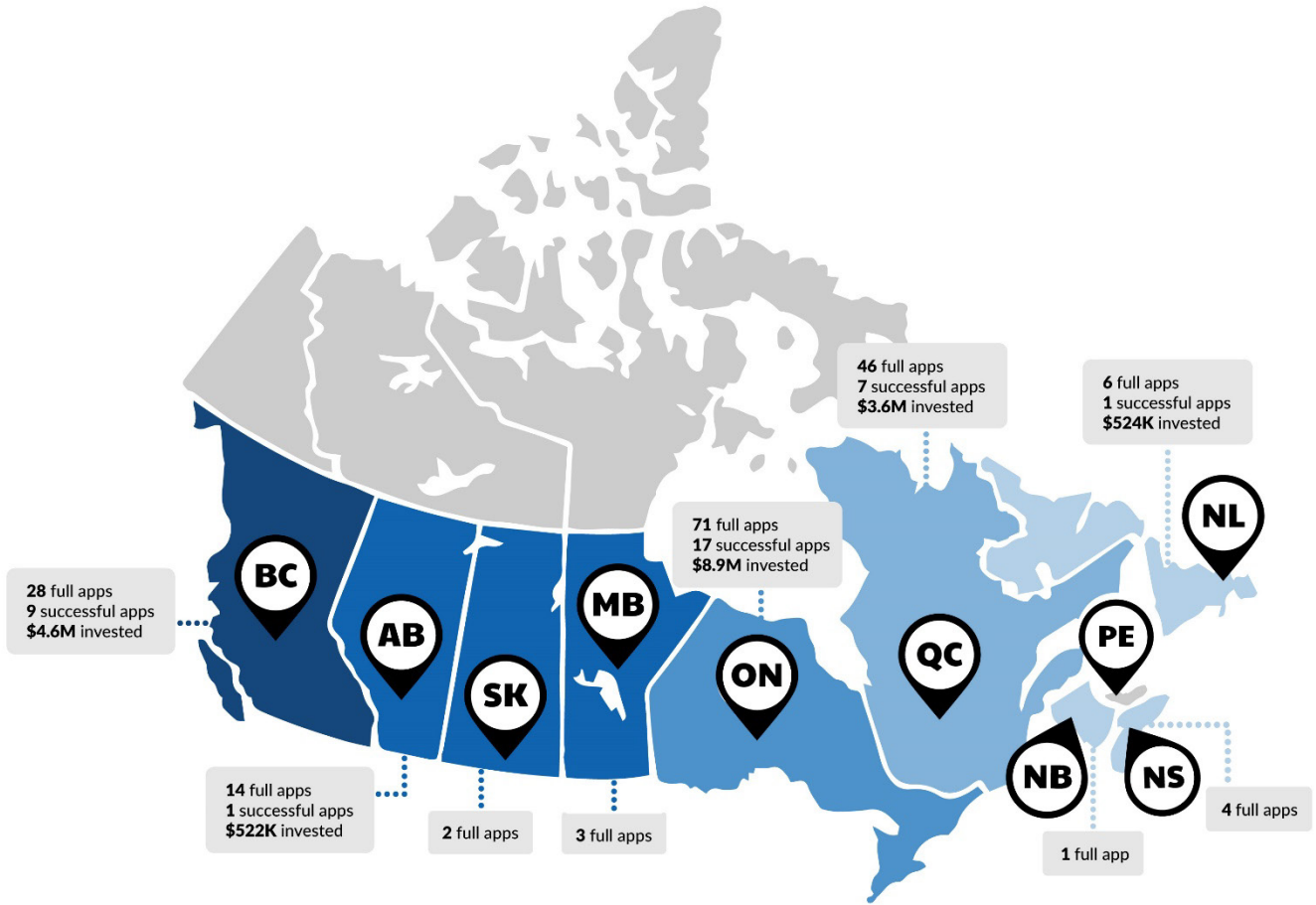
Investment by cancer site



Cancer site	Investment
Bone and connective tissues	\$1,481,265
Brain	\$524,825
Breast	\$3,525,530
Cervix	\$525,000
Colorectal	\$525,000
Eye	\$525,000
Head and Neck	\$442,450
Leukemia	\$1,831,320
Lung	\$524,988
Lymphoma	\$524,878
Non-Hodgkin's Lymphoma	\$1,311,721
Non-specific/All sites	\$3,243,364
Oral	\$525,000
Other	\$525,000
Ovary	\$519,789
Pancreas	\$262,436
Prostate	\$1,310,994
Total	\$18,127,560



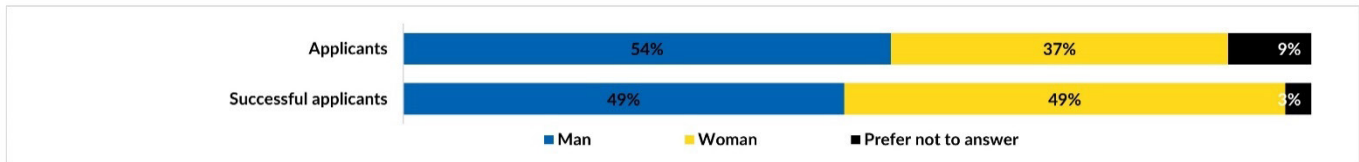
Results by province of the 2023 Challenge Grants



Province	Full applications received	Successful applications (percent of total applications)	Percent of total successful applications	Investment
Alberta	14	1 (7%)	3%	\$522,125
British Columbia	28	9 (32%)	26%	\$4,615,448
Manitoba	3	0 (0%)	0%	\$0
New Brunswick	1	0 (0%)	0%	\$0
Newfoundland and Labrador	6	1 (17%)	3%	\$524,604
Nova Scotia	4	0 (0%)	0%	\$0
Ontario	71	17 (24%)	49%	\$8,890,328
Quebec	46	7 (15%)	20%	\$3,575,054
Saskatchewan	2	0 (0%)	0%	\$0



Results by gender identity

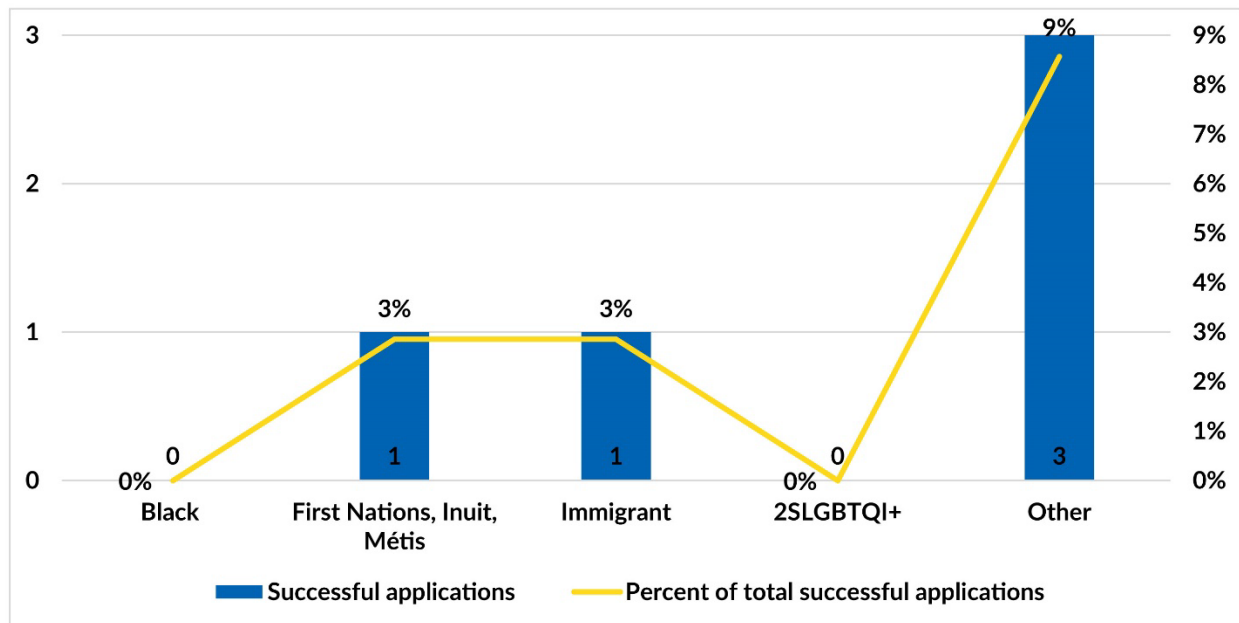


Gender	Full applications received	Successful applications (percent of total applications)	Percent of total successful applications
Man	94	17 (18%)	49%
Woman	65	17 (26%)	49%
Prefer not to answer	16	1 (6%)	3%

Man includes transgender. Woman includes transgender.



Projects relevant to underserved populations

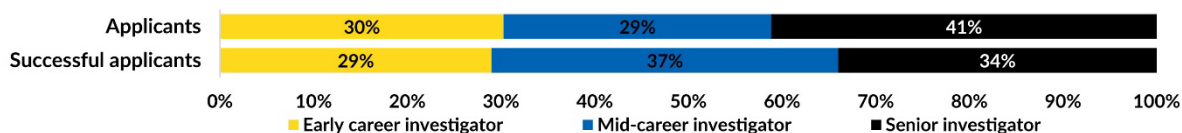


Underserved populations	Successful applications	Percent of total successful applications
Black	0	0%
First Nations, Inuit, Métis	1	3%
Immigrant	1	3%
2SLGBTQI+	0	0%
Other	3	9%

Count is inclusive of grants that specifically work with underserved populations only. More than one underserved population can apply for any individual application. The 'Other' category includes but is not limited to adults aged 65+, and women sex workers or ex-prisoners.



Results by career stage



Career stage	Full applications	Successful applications	Percent of total successful applications
Early career investigator	53	10	29%
Mid-career investigator	50	13	37%
Senior investigator	72	12	34%

Early career, mid-career and senior investigators assumed their first independent academic appointment < 5, 5-15 and >15 years from the time of application, respectively, with time deducted for COVID-19 and personal absences.